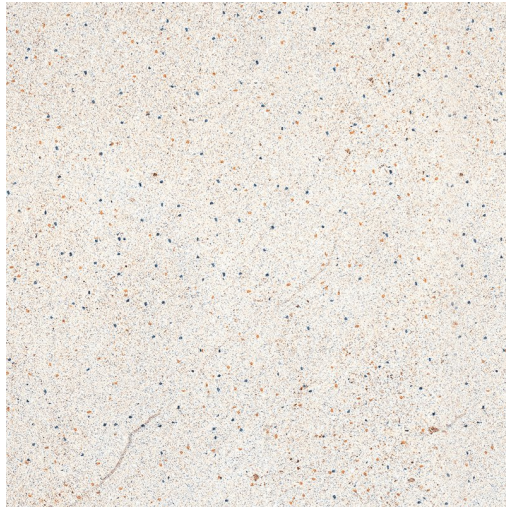


COAST PRODUCT DATA SHEET



Available Sizes

1190x600x10.5mm
600x600x10.5mm
600x300x10.5mm
890x890x10.5mm

Samples Service

Tel: +44 (0)1782 524 043
Fax: +44 (0)1782 577 379
Email: samples@johnson-tiles.com

Technical Helpline

Tel: +44 (0)1782 524 111
Fax: +44 (0)1782 577 379
Email: techadvice@johnson-tiles.com

www.johnson-tiles.com

Recycled Content **Up to 10%**

Range	Coast
Category	Stone, Speckle, Floor Tiles, PTV 36+ Tiles
Collection	Select Collection
Short Code	CST01N
Colour	Ivory
Finish	Natural
Wall Suitability	Internal & External
Floor Suitability	Internal Only
Wet Barefoot	-
Material	Un-glazed Porcelain
Classification	Bla
Light Reflectance Value	57.00
CSV	V4
PTV (4S)	Wet 36+ Dry 36+
PTV (TRL)	-
R Value	10
Wet Ramp	B
PEI	-
Traffic	Commercial

Physical Properties

Test / Standard	Requirement	Test Result
Length/Width EN ISO 10545-2	$\pm 0.6\% \leq \pm 2\text{mm}$	$\pm 0.3\%$
Thickness EN ISO 10545-2	$\pm 5\% \leq \pm 0.5\text{mm}$	$\pm 3\%$
Straightness of Sides EN ISO 10545-2	$\pm 0.5\% \leq \pm 1.5\text{mm}$	$\pm 0.3\%$
Rectangularity EN ISO 10545-2	$\pm 0.5\% \leq \pm 2\text{mm}$	$\pm 0.3\%$
Surface Flatness EN ISO 10545-2	$\pm 0.5\% \leq \pm 2\text{mm}$	$\pm 0.3\%$
Water Absorption EN ISO 10545-3	$\leq 0.5\%$	$\leq 0.1\%$
Modulus of Rupture EN ISO 10545-4	$\geq 35\text{N/mm}^2$	$\geq 45\text{N/mm}^2$
Thermal Shock EN ISO 10545-9	Pass	Pass
Frost Resistance EN ISO 10545-12	Resistant	Resistant
Chemical Resistance EN ISO 10545-13	Min Class B	Class A
Stain Resistance EN ISO 10545-14		Class 5
UV Colour Resistance		Unaffected by light
Fire Rating Not Applicable	N/A	Class A1 FL Non Combustible
Weight/m² Thickness: 10.5mm		24.35kg

Tile colours shown of the tile product on this data sheet are as accurate as the limitations of the printing process will allow. Due to the manufacturing process of all floor tiles there may be small variations in slip resistance. The slip resistance values provided are accurate at the time of testing and represent the standard production value. Please note, inadequate cleaning and maintenance will lead to a significant reduction in the slip resistance of any tiles. The pendulum test results are displayed in line with The Health & Safety Executive guidelines whereby 0 - 24 represents a high slip potential, 25 - 35 signifies a moderate slip potential and 36+ represents a low slip potential. All figures are accurate at the time of this data sheets creation (21/03/2021). Johnson Tiles is a division of Norcros Group (Holdings) Limited, Ladyfield House, Station Road, Wilmstow, Cheshire, SK9 1BU. Registered in England No. 566694. Johnson Tiles, Johnson, Absolute and Material Lab are registered trademarks and together with Kerastar and product names are the trademarks of H&R Johnson Tiles Limited and licensed to Norcros Group (Holdings) Limited trading as Johnson Tiles. © 2021 Johnson Tiles. All rights reserved.