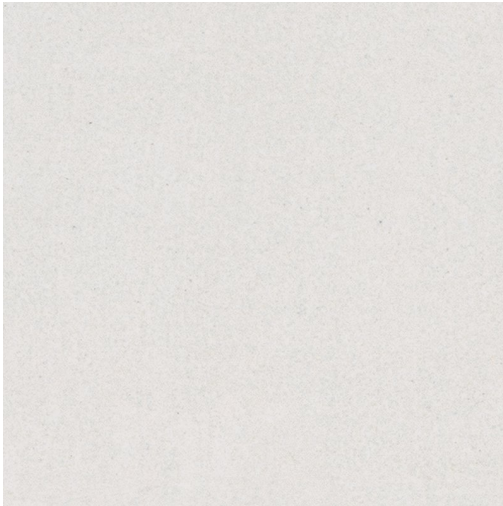


# DISTRICT PRODUCT DATA SHEET



## Available Sizes

600x600x9mm  
 900x450x9mm  
 600x300x9mm  
 900x900x9mm  
 600x100x9mm

## Samples Service

Tel: +44 (0)1782 524 043  
 Fax: +44 (0)1782 577 379  
 Email: [samples@johnson-tiles.com](mailto:samples@johnson-tiles.com)

## Technical Helpline

Tel: +44 (0)1782 524 111  
 Fax: +44 (0)1782 577 379  
 Email: [techadvice@johnson-tiles.com](mailto:techadvice@johnson-tiles.com)

[www.johnson-tiles.com](http://www.johnson-tiles.com)

Recycled Content **Up to 30%**

Range	<b>District</b>
Category	<b>Concrete, Floor Tiles, PTV 36+ Tiles</b>
Collection	<b>Absolute Collection</b>
Short Code	<b>DIS01G</b>
Colour	<b>Stone White</b>
Finish	<b>Grip</b>
Wall Suitability	<b>Internal &amp; External</b>
Floor Suitability	<b>Internal &amp; External</b>
Wet Barefoot	<b>Yes</b>
Material	<b>Porcelain</b>
Classification	<b>Bla</b>
Light Reflectance Value	<b>65.00</b>
CSV	<b>V2</b>
PTV (4S)	<b>Wet 36+ Dry 36+</b>
PTV (TRL)	<b>Wet 36+</b>
R Value	<b>11</b>
Wet Ramp	<b>C</b>
PEI	<b>-</b>
Traffic	<b>Commercial</b>

## Physical Properties

Test / Standard	Requirement	Test Result
<b>Length/Width</b> EN ISO 10545-2	$\pm 0.6\% \leq \pm 2\text{mm}$	<b>Pass</b>
<b>Thickness</b> EN ISO 10545-2	$\pm 5\% \leq \pm 0.5\text{mm}$	<b>Pass</b>
<b>Straightness of Sides</b> EN ISO 10545-2	$\pm 0.5\% \leq \pm 1.5\text{mm}$	<b>Pass</b>
<b>Rectangularity</b> EN ISO 10545-2	$\pm 0.5\% \leq \pm 2\text{mm}$	<b>Pass</b>
<b>Surface Flatness</b> EN ISO 10545-2	$\pm 0.5\% \leq \pm 2\text{mm}$	<b>Pass</b>
<b>Water Absorption</b> EN ISO 10545-3	$\leq 0.5\%$	<b><math>\leq 0.5\%</math></b>
<b>Modulus of Rupture</b> EN ISO 10545-4	$\geq 35\text{N/mm}^2$	<b><math>\geq 35\text{N/mm}^2</math></b>
<b>Thermal Shock</b> EN ISO 10545-9	Pass	<b>Pass</b>
<b>Frost Resistance</b> EN ISO 10545-12	Resistant	<b>Resistant</b>
<b>Chemical Resistance</b> EN ISO 10545-13	Min Class B	<b>Pass</b>
<b>Stain Resistance</b> EN ISO 10545-14	Min Class 3	<b>Class 5</b>
<b>Fire Rating</b> Not Applicable	N/A	<b>Class A1 FL Non Combustible</b>
<b>Weight/m²</b> Thickness: 9mm		<b>21.19kg</b>

Tile colours shown of the tile product on this data sheet are as accurate as the limitations of the printing process will allow. Due to the manufacturing process of all floor tiles there may be small variations in slip resistance. The slip resistance values provided are accurate at the time of testing and represent the standard production value. Please note, inadequate cleaning and maintenance will lead to a significant reduction in the slip resistance of any tiles. The pendulum test results are displayed in line with The Health & Safety Executive guidelines whereby 0 - 24 represents a high slip potential, 25 - 35 signifies a moderate slip potential and 36+ represents a low slip potential. All figures are accurate at the time of this data sheets creation (21/03/2021). Johnson Tiles is a division of Norcros Group (Holdings) Limited, Ladyfield House, Station Road, Wilmstow, Cheshire, SK9 1BU. Registered in England No. 566694. Johnson Tiles, Johnson, Absolute and Material Lab are registered trademarks and together with Kerastar and product names are the trademarks of H&R Johnson Tiles Limited and licensed to Norcros Group (Holdings) Limited trading as Johnson Tiles. © 2021 Johnson Tiles. All rights reserved.