

STATUS

UN-GLAZED PORCELAIN | FLOOR & WALL TILES

CONCRETE ABSOLUTE



JOHNSON • TILES 

MADE IN THE UK SINCE 1901

STATUS



4 SIZES

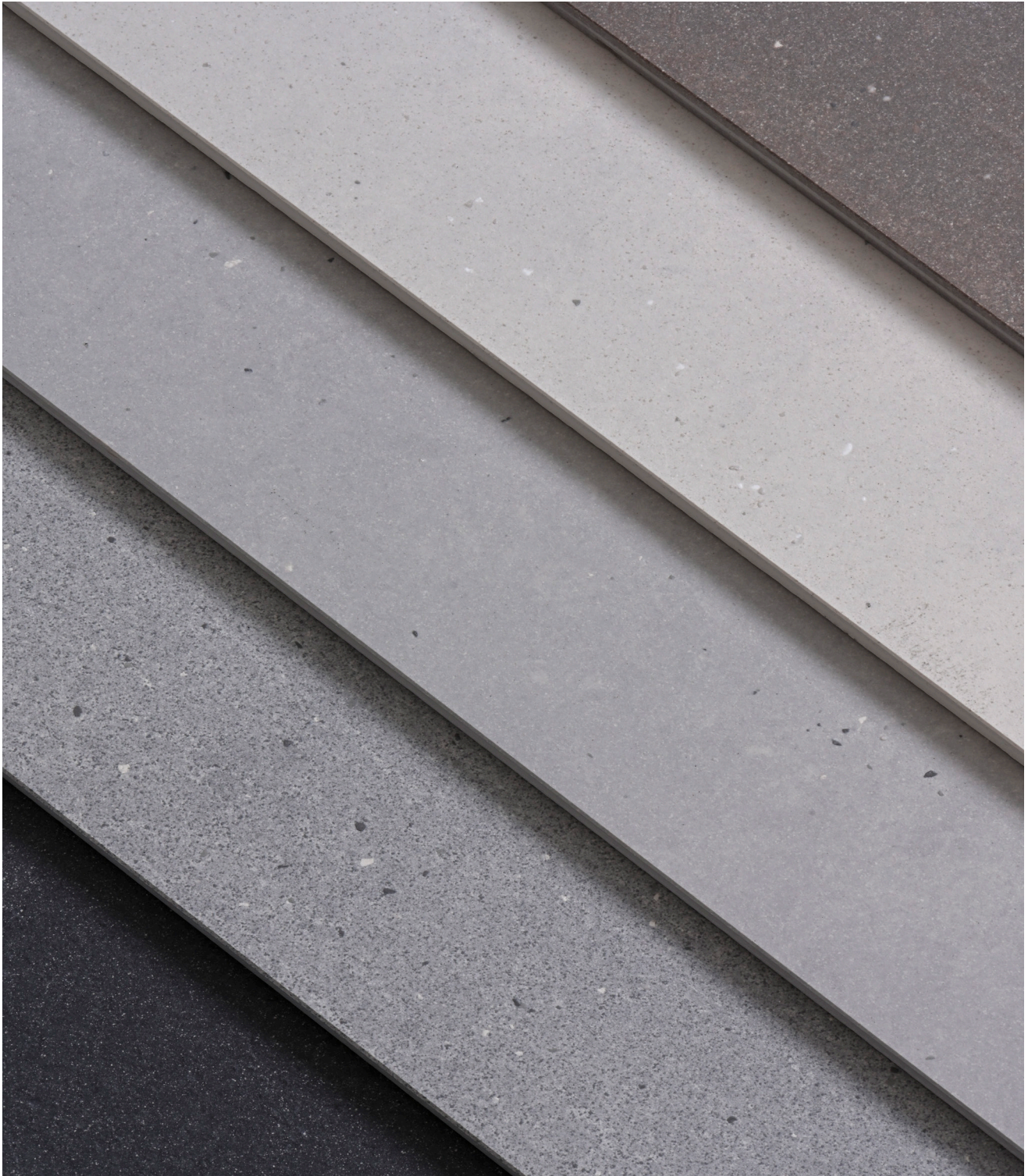


5 COLOURS



3 FINISHES

Designed for commercial spaces, Status is comprised of five neutral colours for a softer approach to the industrial trend. Status features three surface finishes with the Bush Hammered option achieving a PTV slip resistance rating of 36+, suitable for wet barefoot areas and external flooring applications for added versatility. Blend tones from across the colour palette for a sleek, contemporary look.





Light Grey Natural 600x600x10.5mm - STA02N



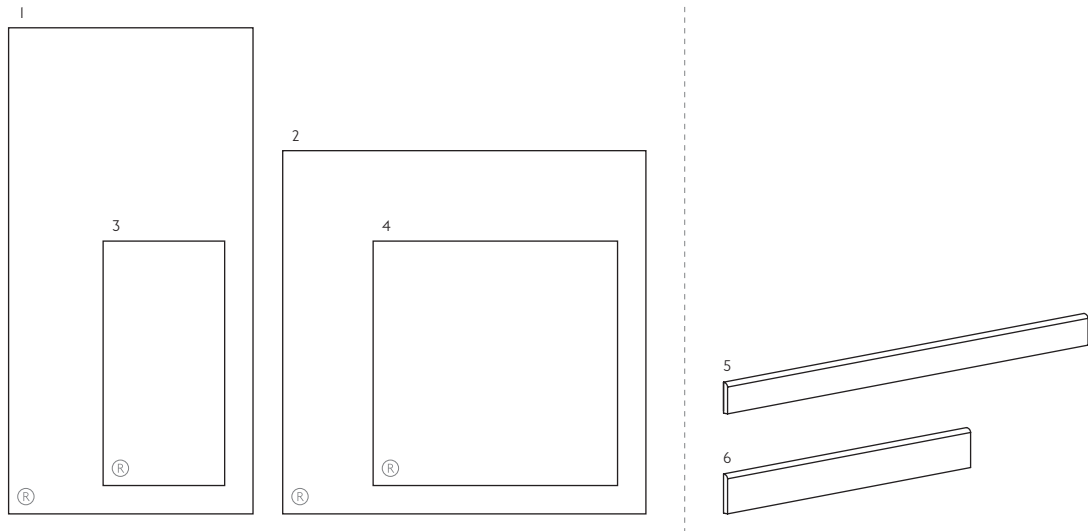
Steel Bush Hammered 600x600x10.5mm - STA04B



Graphite Natural | 190x600x10.5mm - STA05N
Light Grey Natural | 190x600x10.5mm - STA02N



Size Formats Sizing & Packing Information



#	Size	Thickness	Finish	Structure	Colour Availability	Pcs / Box	M2 / Box	Kg / Box
1	1190x600mm	10.5mm	(N) Natural	-	All Colours	1 Tile	0.72m ²	17.40kg
2	890x890mm	10.5mm	(N) Natural	-	All Colours	1 Tile	0.80m ²	19.40kg
3	600x600mm	10.5mm	(M) Matt	-	All Colours	3 Tiles	1.08m ²	24.40kg
			(N) Natural	-	All Colours	3 Tiles	1.08m ²	24.40kg
			(B) Bush Hammered	-	All Colours	3 Tiles	1.08m ²	24.40kg
4	600x300mm	10.5mm	(M) Matt	-	All Colours	6 Tiles	1.08m ²	24.40kg
			(N) Natural	-	All Colours	6 Tiles	1.08m ²	24.40kg
			(B) Bush Hammered	-	All Colours	6 Tiles	1.08m ²	24.40kg

#	Fitting	Thickness	Finish	Structure	Colour Availability	Pcs / Box	LM / Box	Kg / Box
5	890x75mm Round Top Skirting	10.5mm	(N) Natural	-	All Colours	13 Tiles	11.57lm	21.20kg
			(M) Matt	-	All Colours	18 Tiles	10.80lm	24.00kg
6	600x95mm Round Top Skirting	10.5mm	(N) Natural	-	All Colours	18 Tiles	10.80lm	24.00kg
			(B) Bush Hammered	-	All Colours	18 Tiles	10.80lm	24.00kg

Note: All sizes indicated are metric modular. All sizes shown are nominal. (R) Rectified Edge.
For the most up-to-date product availability information for this range, please visit our website - www.johnson-tiles.com

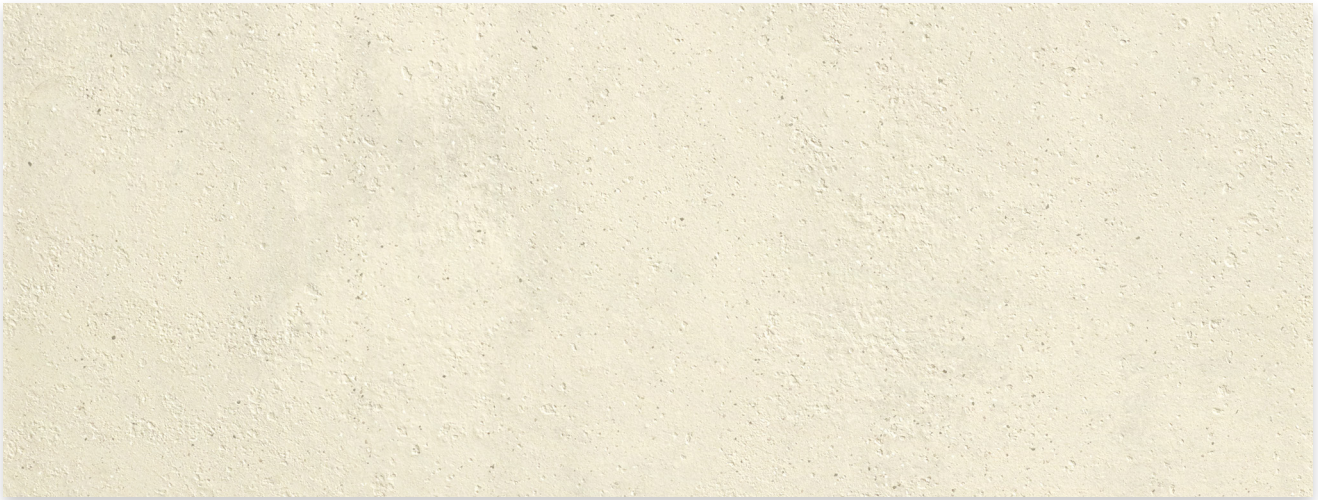


Ivory Matt 600x600x10.5mm - STA01M



Colours & Product Codes

V2: Low to Moderate Shade Variation



IVORY LRV: 64

Product Codes: M STA01M + N STA01N + B STA01B | Fitting Codes: M STA1MS + N STA1NS + B STA1BS



LIGHT GREY LRV: 50

Product Codes: M STA02M + N STA02N + B STA02B | Fitting Codes: M STA2MS + N STA2NS + B STA2BS



TAUPE LRV: 24

Product Codes: M STA03M + N STA03N + B STA03B | Fitting Codes: M STA3MS + N STA3NS + B STA3BS



Colours & Product Codes

V2: Low to Moderate Shade Variation



STEEL LRV: 38

Product Codes: M STA04M + N STA04N + B STA04B | Fitting Codes: M STA4MS + N STA4NS + B STA4BS



GRAPHITE LRV: 15

Product Codes: M STA05M + N STA05N + B STA05B | Fitting Codes: M STA5MS + N STA5NS + B STA5BS



Steel Bush Hammered 600x600x10.5mm - STA04B



Technical, Sustainability & Important Information

Specification

Range	Finish	Wall Suitability	Floor Suitability	Wet Barefoot	CSV	Material
Status	Matt	Internal & External	Internal Only	-	V2	Un-glazed Porcelain (Bla)
	Natural	Internal & External	Internal Only	-	V2	Un-glazed Porcelain (Bla)
	Bush Hammered	Internal & External	Internal & External	Yes	V2	Un-glazed Porcelain (Bla)

Floor Values

Finish	Structure	Colour	PTV (4S)	PTV (TRL)	R Value	Wet Ramp	PEI	Traffic
Matt	-	All Colours	Dry 36+ Wet 0 - 24	-	R9	-	-	Commercial
Natural	-	All Colours	Dry 36+ Wet 36+	-	R10	-	-	Commercial
Bush Hammered	-	All Colours	Dry 36+ Wet 36+	Wet 36+	R11	-	-	Commercial

Physical Properties

Test & Standard	Requirement	Test Result	Test & Standard	Requirement	Test Result
Length / Width EN ISO 10545 - 2	$\pm 0.6\% \leq \pm 2\text{mm}$	$\pm 0.3\%$	Modulus of Rupture EN ISO 10545 - 4	Min. 35N / mm ²	$\geq 45\text{N} / \text{mm}^2$
Thickness EN ISO 10545 - 2	$\pm 5\% \leq \pm 0.5\text{mm}$	$\pm 3\%$	Thermal Shock EN ISO 10545 - 9	Pass	Pass
Straightness of Side EN ISO 10545 - 2	$\pm 0.5\% \leq \pm 1.5\text{mm}$	$\pm 0.3\%$	Frost Resistance EN ISO 10545 - 12	Resistant	Resistant
Rectangularity EN ISO 10545 - 2	$\pm 0.5\% \leq \pm 2\text{mm}$	$\pm 0.3\%$	Chemical Resistance EN ISO 10545 - 13	Min. Class B	Min Class B
Surface Flatness EN ISO 10545 - 2	$\pm 0.5\% \leq \pm 2\text{mm}$	$\pm 0.3\%$	Stain Resistance EN ISO 10545 - 14	Min. Class 3	$\geq \text{Class 2}$
Water Absorption EN ISO 10545 - 3	$\leq 0.5\%$	$\leq 0.1\%$	Fire Rating	-	Class A I FL Non Combustible
Weight / M ²	23.49kg 10.5mm thick				

Sustainability Information

Range	Material	EPD	Recycled Content of the Tiles	Recycled Content of the Packaging	Recyclable Content of the Packaging
Status	Un-glazed Porcelain (Bla)	Yes	Up to 30%	Up to 100% (Boxes)	Up to 100%

Note: Due to the manufacturing process of all floor tiles there may be small variations in slip resistance. Given this, please refer to our website for the most up-to-date information. The slip resistance properties of a surface can only be maintained with the implementation of an effective regular cleaning and maintenance regime. The frequency of cleaning should be determined by the property manager based on the potential level of surface contaminants. The need for an additional regular cleaning and maintenance regime is further heightened when tiles are used for external floor and wet barefoot applications.

Please contact our technical helpline, or visit our website for specification and installation advice. All un-glazed porcelain (Bla) products listed conform to BS EN 14411.

CSV: Colour Shade Variation, PTV (4S): Pendulum Test Value - Slider 96, PTV (TRL): Pendulum Test Value - Slider 55, R Value (DIN 51130), Wet Ramp (DIN 51097), PEI: Porcelain Enamel Institute.

For a full overview of our environmental credentials please visit www.johnson-tiles.com/about/sustainability. EPD: Environmental Product Declaration.

Important Information

During the manufacturing process of ceramic and porcelain tiles, some variation in shade and pattern can occur. Before fixing any tiles; several boxes should be opened and their contents mixed to ensure that size, colour, shade and patterning are acceptable. The tiles shown are quality products and conform to the physical properties listed. For a comprehensive colour, size and finish overview along with full technical and sustainability information for all of the product shown in this product presenter, please visit our website - www.johnson-tiles.com.

- All sizes shown are metric modular.
- For specific suitability details please contact our technical department.
- Johnson Tiles cannot accept responsibility for tiles that have been fixed.
- Every effort has been made to ensure the accuracy of the information given.
- Johnson Tiles reserves the right to change specification and availability information without prior notice.
- Nothing in these statements does/will affect the statutory rights of the consumer.

© Johnson Tiles, Johnson, Absolute and Material Lab are registered trademarks and together with Kerastar and product names are the trademarks of H&R Johnson Tiles Limited and licensed to Norcros Group (Holdings) Limited trading as Johnson Tiles. © 2022 Johnson Tiles. All rights reserved.



All product technical values quoted in this product presenter are supported by laboratory testing from our own and independent ceramic test houses. Johnson Tiles are British Standard registered and all products conform to the standards set in BS EN 14411.

For the reassurance of single-source supply, Johnson Tiles offers a free of charge NBS M40 specification writing service featuring the Norcros Adhesives range of tile fixing products. To find out more or for any questions or queries relating to any tile related technical information featured in this product presenter, please contact our technical advice helpline on +44 (0) 1782 524 111 or email ddunlop@johnson-tiles.com

The colours shown in this sample tile wallet and attached booklet are as accurate as printing processes will allow. Please refer to actual product samples before specifying. Every effort has been made to ensure the accuracy of the information given.

For more information about Status or any
of our other product ranges simply visit

www.johnson-tiles.com | [f](#) [t](#) [i](#) [p](#) [in](#) [v](#)

Where To Find & Contact Us

Johnson Tiles Head Office

Harewood Street, Tunstall,
Stoke on Trent, Staffordshire,
ST6 5JZ, United Kingdom

Tel: +44 (0)1782 575 575

Email: info@johnson-tiles.com

www.johnson-tiles.com

Material Lab Studio

10 Great Titchfield Street,
London, W1W 8BB,
United Kingdom

Tel: +44 (0)20 7436 8629

Email: info@material-lab.co.uk

www.material-lab.co.uk

Johnson Tiles Factory Outlet

Tel: +44 (0)1782 524 040

Email: foutlet@johnson-tiles.com

www.outlet.johnson-tiles.com

Customer Services

Tel: +44 (0)1782 524 000

Email: sales@johnson-tiles.com

Order A Sample

Tel: +44 (0)1782 524 043

Email: samples@johnson-tiles.com

Technical Advice

Tel: +44 (0)1782 524 111

Email: ddunlop@johnson-tiles.com

Launched: March 2022

JOHNSON • TILES 
MADE IN THE UK SINCE 1901

Johnson Tiles is a division of Norcross Group (Holdings) Limited,
Ladyfield House, Station Road, Wilmslow, Cheshire, SK9 1BU,
United Kingdom. Registered in England number 566694.