

LAGOS

GLAZED PORCELAIN | FLOOR & WALL TILES

STONE EFFECT TILES **INTRO**



JOHNSON • TILES 
MADE IN THE UK SINCE 1901

LAGOS

Featuring beautiful, textured tiles emulating natural slate, Lagos is the perfect backdrop for any installation. Team with neutrals for an understated elegance, or pair with colours for a stunning design scheme. With one size available of 330x330mm, Lagos contains 5 colours, including White, Beige, and Black.

Front Cover Image: White Rock Structure Matt 330x330mm - LAGO4F



Black Rock Structure Matt 330x330mm - LAGO2F





Roomset Photography





Colours & Product Codes

V1: Low Shade Variation



DARK GREY ROCK STRUCTURE

M LAGO1F **PEI: I** **LRV: 13**



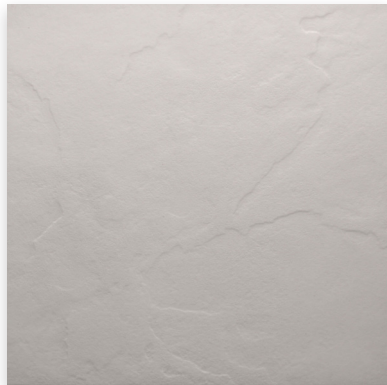
BLACK ROCK STRUCTURE

M LAGO2F **PEI: I** **LRV: 6**



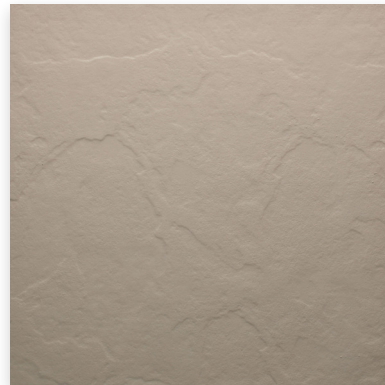
LIGHT GREY ROCK STRUCTURE

M LAGO3F **PEI: II** **LRV: 29**



WHITE ROCK STRUCTURE

M LAGO4F **PEI: IV** **LRV: 64**

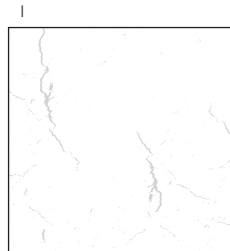


BEIGE ROCK STRUCTURE

M LAGO5F **PEI: III** **LRV: 54**



Sizes, Finishes & Availability



#	Size	Finish	Colour Availability	Thickness	Pieces/Box	Coverage/Box	Weight/Box
1	330x300mm Rock Structure	M Matt	All Colours Shown	8.5mm	10 Tiles	1.09 m ²	18.08 kg

Note: All sizes indicated are metric modular. All dimensions are in millimetres. All sizes shown are nominal. For the most up-to-date availability information, please visit our website. All LRV results are from Johnson Tiles' internal test reports and are to be used for guidance only. LRV: Light Reflectance Value.



Technical Data

Specification

Range	Size	Wall Suitability	Floor Suitability	Wet Barefoot	CSV	Material
Lagos	All Sizes Shown	Internal & External	Internal Only	-	VI	Glazed Porcelain [Bla]

Floor Values

Finish	Colour	PTV (4S)	PTV (TRL)	R Value	Wet Ramp	PEI	Traffic
M Matt	White	Dry 36+ Wet 0 - 24	-	-	-	I	Light Domestic
M Matt	Beige	Dry 36+ Wet 0 - 24	-	-	-	II	Domestic
M Matt	Light Grey	Dry 36+ Wet 0 - 24	-	-	-	III	Light Commercial
M Matt	Black & Dark Grey	Dry 36+ Wet 0 - 24	-	-	-	IV	Commercial

Note: Due to the manufacturing process of all floor tiles there may be small variations in slip resistance. Given this, please refer to our website for the most up-to-date information. The slip resistance properties of a surface can only be maintained with the implementation of an effective regular cleaning and maintenance regime. The frequency of cleaning should be determined by the property manager based on the potential level of surface contaminants. The need for an additional regular cleaning and maintenance regime is further heightened when tiles are used for external floor and wet barefoot applications. PTV: Pendulum Test Value.

Physical Properties

Test/Standard	Requirement	Test Result	Test/Standard	Requirement	Test Result
Length / Width EN ISO 10545 - 2	$\pm 0.6\% \leq \pm 2\text{mm}$	Pass	Modulus of Rupture EN ISO 10545 - 4	Min. 35N / mm ²	$\geq 35\text{N} / \text{mm}^2$
Thickness EN ISO 10545 - 2	$\pm 5\% \leq \pm 0.5\text{mm}$	Pass	Thermal Shock EN ISO 10545 - 9	Pass	Pass
Straightness of Side EN ISO 10545 - 2	$\pm 0.5\% \leq \pm 1.5\text{mm}$	Pass	Frost Resistance EN ISO 10545 - 12	Resistant	Resistant
Rectangularity EN ISO 10545 - 2	$\pm 0.5\% \leq \pm 2\text{mm}$	Pass	Chemical Resistance EN ISO 10545 - 13	Min. Class B	Pass
Surface Flatness EN ISO 10545 - 2	$\pm 0.5\% \leq \pm 2\text{mm}$	Pass	Stain Resistance EN ISO 10545 - 14	Min. Class 3	Pass
Water Absorption EN ISO 10545 - 3	$\leq 0.5\%$	$\leq 0.5\%$	Fire Rating	-	Class A1 _{FL} Non Combustible
Weight / M ²	18.10 kg 8.5mm thick				

Note: All products are classed as Bla - Glazed Porcelain. All products conform to BS EN 14411.

Sustainability Information

Range	Material	Recycled Content of the Tiles	Recycled Content of the Packaging	Recyclable Content of the Packaging	EPD	SKA Rating
Lagos	Glazed Porcelain [Bla]	Up to 10%	-	Up to 100%	-	-

Important Information

During the manufacturing process of ceramic, vitrified and porcelain tiles, some variation in shade and pattern can occur. Before fixing any tiles; several boxes should be opened and their contents mixed to ensure that size, colour, shade and patterning are acceptable. The tiles shown are quality products and conform to the physical properties listed below.

- All sizes shown are metric modular.
- For specific suitability and fit-for-purpose details please contact our technical helpline.
- Johnson Tiles cannot accept responsibility for any tiles that have been fixed.
- Every effort has been made to ensure the accuracy of the information given.
- Johnson Tiles reserves the right to change specifications and availability without prior notice.
- Nothing in these statements does or will affect the statutory rights of the consumer.

© Johnson Tiles, Johnson, Absolute and Material Lab are registered trademarks and together with Kerastar and product names are the trademarks of H&R Johnson Tiles Limited and licensed to Norcros Group (Holdings) Limited trading as Johnson Tiles. © 2021 Johnson Tiles. All rights reserved.



For more information about Lagos or any
of our other product ranges simply visit
www.johnson-tiles.com |      

Where To Find Us

Johnson Tiles

Harewood Street,
Tunstall,
Stoke on Trent,
Staffordshire,
ST6 5JZ

Tel: +44 (0)1782 575 575
Fax: +44 (0)1782 577 377
Email: info@johnson-tiles.com

Samples Enquiries

Tel: +44 (0)1782 524 043
Fax: +44 (0)1782 577 379
Email: samples@johnson-tiles.com

Technical Helpline

Tel: +44 (0)1782 524 111
Fax: +44 (0)1782 577 379
Email: techadvice@johnson-tiles.com

JOHNSON • TILES 
MADE IN THE UK SINCE 1901