

# ATRIUM

GLAZED PORCELAIN | FLOOR & WALL TILES

CONCRETE EFFECT TILES



JOHNSON • TILES   
MADE IN THE UK SINCE 1901

# ATRIUM

Atrium is both simple and strong, with a stormy palette of 4 colours that deliver room-defining character. With numerous large format sizes available in both a Natural and Grip finish, this range captures the effect of concrete to convey a modern, industrial look. The Grip finish offers a PTV 36+ slip resistance rating, making Atrium the perfect choice for high-traffic, large open spaces.

Front Cover Image: Pumice Natural 600x300mm - ATRM3N & Pumice Natural 592x592mm - ATRM03N



Clay Natural 900x450mm - ATRM1N



## Roomset Photography





## Colours & Product Codes

V3: Moderate to High Shade Variation



### CLAY

(N) ATRMIN + (G) ATRMIG (PEI: IV) (LRV: 40)



### PRALINE

(N) ATRM2N + (G) ATRM2G (PEI: IV) (LRV: 24)



### PUMICE

(N) ATRM3N + (G) ATRM3G (PEI: IV) (LRV: 29)



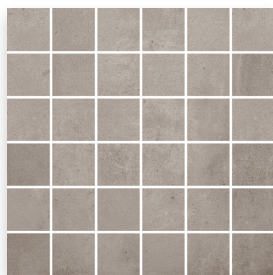
### GRAPHITE

(N) ATRM4N + (G) ATRM4G (PEI: IV) (LRV: 18)



### CLAY

(N) ATRM1M (PEI: IV) (LRV: 55)



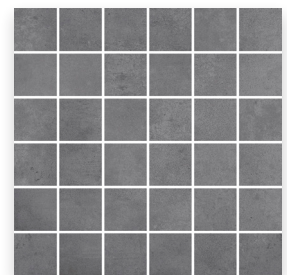
### PRALINE

(N) ATRM2M (PEI: IV) (LRV: 24)



### PUMICE

(N) ATRM3M (PEI: IV) (LRV: 29)

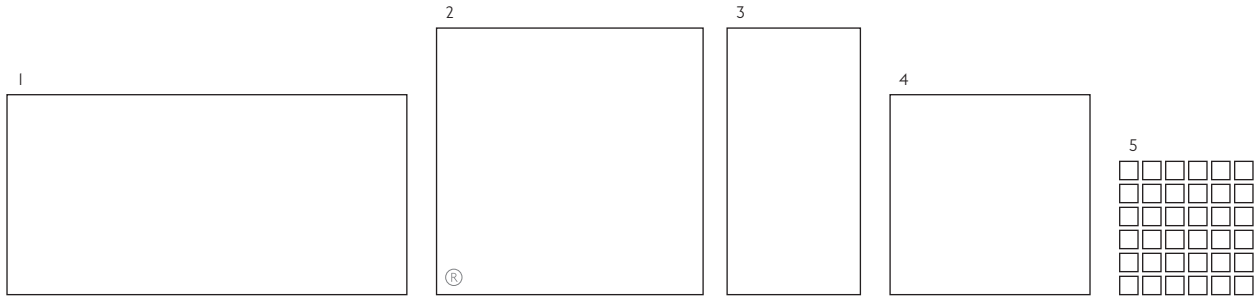


### GRAPHITE

(N) ATRM4M (PEI: IV) (LRV: 18)



## Sizes, Finishes & Availability



#	Size	Finish	Colour Availability	Thickness	Pieces/Box	Coverage/Box	Weight/Box
1	900x450mm	Natural	All Colours Shown	12mm	2 Tiles	0.81 m <sup>2</sup>	17.72 kg
2	592x592mm	Natural	All Colours Shown	10mm	3 Tiles	1.08 m <sup>2</sup>	23.20 kg
		Grip	All Colours Shown	10mm	3 Tiles	1.08 m <sup>2</sup>	23.20 kg
3	600x300mm	Natural	All Colours Shown	8.5mm	7 Tiles	1.26 m <sup>2</sup>	22.60 kg
		Grip	All Colours Shown	8.5mm	7 Tiles	1.26 m <sup>2</sup>	22.60 kg
4	450x450mm	Natural	All Colours Shown	8.5mm	5 Tiles	1.02 m <sup>2</sup>	19.20 kg
5	300x300mm Square Mosaic	Natural	All Colours Shown	8.5mm	11 Sheets	0.99 m <sup>2</sup>	18.40 kg

**Note:** All sizes indicated are metric modular. All dimensions are in millimetres. All sizes shown are nominal. For the most up-to-date availability information, please visit our website. ALL LRV results are from Johnson Tiles' internal test reports and are to be used for guidance only. LRV: Light Reflectance Value. Rectified Edge

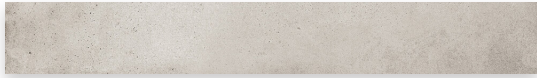


Pumice Natural 600x300mm - ATRM3N



### Additional Fittings

V3: Moderate to High Shade Variation



#### CLAY

(N) ATRM1S LRV: 40



#### PRALINE

(N) ATRM2S LRV: 24



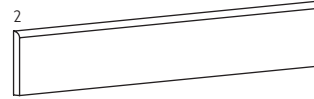
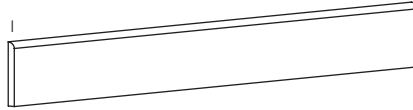
#### PUMICE

(N) ATRM3S LRV: 29



#### GRAPHITE

(N) ATRM4S LRV: 18



#	Size	Finish	Colour Availability	Thickness	Pieces/Box	Coverage/Box	Weight/Box
1	592x80mm Round Top Skirting	(N) Natural	All Colours Shown	10mm	6 Tiles	35.5 lm	6.00 kg
2	450x80mm Round Top Skirting	(N) Natural	All Colours Shown	8.5mm	28 Tiles	12.60 lm	20.00 kg

**Note:** All sizes indicated are metric modular. All dimensions are in millimetres. All sizes shown are nominal. For the most up-to-date availability information, please visit our website. All LRV results are from Johnson Tiles' internal test reports and are to be used for guidance only. LRV: Light Reflectance Value.



Graphite Grip 600x300mm - ATRM4G





## Technical Data

### Specification

Range	Size / Finish	Wall Suitability	Floor Suitability	Wet Barefoot	CSV	Material
Atrium	All Sizes Shown	Internal & External	Internal Only	-	V3	Glazed Porcelain [Bla]
	All Sizes Shown	Internal & External	Internal & External	Yes	V3	Glazed Porcelain [Bla]

### Floor Values

Finish	Colour	PTV (4S)	PTV (TRL)	R Value	Wet Ramp	PEI	Traffic
Natural	All Colours Shown	Dry 36+ Wet 25 - 35	-	R9	-	IV	Commercial
Grip	All Colours Shown	Dry 36+ Wet 36+	Wet 36+	R11	-	IV	Commercial

**Note:** Due to the manufacturing process of all floor tiles there may be small variations in slip resistance. Given this, please refer to our website for the most up-to-date information. The slip resistance properties of a surface can only be maintained with the implementation of an effective regular cleaning and maintenance regime. The frequency of cleaning should be determined by the property manager based on the potential level of surface contaminants. The need for an additional regular cleaning and maintenance regime is further heightened when tiles are used for external floor and wet barefoot applications. PTV: Pendulum Test Value.

### Physical Properties

Test / Standard	Requirement	Test Result	Test / Standard	Requirement	Test Result
Length / Width EN ISO 10545 - 2	$\pm 0.6\% \leq \pm 2\text{mm}$	$\pm 0.4\%$	Modulus of Rupture EN ISO 10545 - 4	Min. 35N / mm <sup>2</sup>	$\geq 35\text{N} / \text{mm}^2$
Thickness EN ISO 10545 - 2	$\pm 5\% \leq \pm 0.5\text{mm}$	$\pm 5\%$	Thermal Shock EN ISO 10545 - 9	Pass	Pass
Straightness of Side EN ISO 10545 - 2	$\pm 0.5\% \leq \pm 1.5\text{mm}$	$\pm 0.4\%$	Frost Resistance EN ISO 10545 - 12	Resistant	Resistant
Rectangularity EN ISO 10545 - 2	$\pm 0.5\% \leq \pm 2\text{mm}$	$\pm 0.3\%$	Chemical Resistance EN ISO 10545 - 13	Min. Class B	Class A
Surface Flatness EN ISO 10545 - 2	$\pm 0.5\% \leq \pm 2\text{mm}$	$\pm 0.15\%$	Stain Resistance EN ISO 10545 - 14	Min. Class 3	Class 5
Water Absorption EN ISO 10545 - 3	$\leq 0.5\%$	$\leq 0.1\%$	Fire Rating	-	Class A1 <sub>FL</sub> Non Combustible
Weight / M <sup>2</sup>	21.89 kg 12mm thick	21.49 kg 10mm thick	17.94 kg 8.5mm thick		

**Note:** All products are classed as Bla - Glazed Porcelain. All products conform to BS EN 14411.

### Sustainability Information

Range	Material	EPD	Recycled Content of the Tiles	Recycled Content of the Packaging	Recyclable Content of the Packaging
Atrium	Glazed Porcelain [Bla]	Yes	Up to 20%	Up to 100% (Boxes)	-

### Important Information

During the manufacturing process of ceramic, vitrified and porcelain tiles, some variation in shade and pattern can occur. Before fixing any tiles; several boxes should be opened and their contents mixed to ensure that size, colour, shade and patterning are acceptable. The tiles shown are quality products and conform to the physical properties listed below.

- All sizes shown are metric modular.
- For specific suitability and fit-for-purpose details please contact our technical helpline.
- Johnson Tiles cannot accept responsibility for any tiles that have been fixed.
- Every effort has been made to ensure the accuracy of the information given.
- Johnson Tiles reserves the right to change specifications and availability without prior notice.
- Nothing in these statements does or will affect the statutory rights of the consumer.

© Johnson Tiles, Johnson, Absolute and Material Lab are registered trademarks and together with Kerastar and product names are the trademarks of H&R Johnson Tiles Limited and licensed to Norcros Group (Holdings) Limited trading as Johnson Tiles. © 2021 Johnson Tiles. All rights reserved.



For more information about Atrium or any  
of our other product ranges simply visit  
**www.johnson-tiles.com** |      

#### **Where To Find Us**

##### **Johnson Tiles**

Harewood Street,  
Tunstall,  
Stoke on Trent,  
Staffordshire,  
ST6 5JZ

Tel: +44 (0)1782 575 575  
Fax: +44 (0)1782 577 377  
Email: [info@johnson-tiles.com](mailto:info@johnson-tiles.com)

---

##### **Samples Enquiries**

Tel: +44 (0)1782 524 043  
Fax: +44 (0)1782 577 379  
Email: [samples@johnson-tiles.com](mailto:samples@johnson-tiles.com)

---

##### **Technical Helpline**

Tel: +44 (0)1782 524 111  
Fax: +44 (0)1782 577 379  
Email: [techadvice@johnson-tiles.com](mailto:techadvice@johnson-tiles.com)

*Launched: July 2019   Updated: June 2023*

**JOHNSON • TILES**   
MADE IN THE UK SINCE 1901