

LUXX

GLAZED PORCELAIN | FLOOR & WALL TILES

MARBLE

ABSOLUTE



LUXX



EIGHTEEN COLOURS



FOUR SIZES



TWO FINISHES

Luxx is an exciting range of marble effect products, with a variety of different prints available to suit any and every design scheme. With options ranging from Pinto Marble, Greige Onyx, Grey Breche and Carbon Quartz to the five featured animal prints of Turtle, Snake, Oryx, Jaguar and Python. Luxx is a stunning range, ideal for adding character and variation, featuring four co-ordinating large-format sizes ranging from 1200x1200mm to 600x600mm and mosaic options, all available in natural and polished finishes. Luxx invites you to experiment with lay-patterns for striking visual impact in any residential or commercial development,





Oryx Décor Polished 1200x600x6.5mm - LUX05D
 Grey Breche Natural 1200x600x6.5mm - LUX12N



Carbon Quartz Natural 1200x1200x6.5mm - LUX08N





Turtle Décor Polished | 200x600x6.5mm - LUX03D
Bianco Carrara Natural | 200x1200x6.5mm - LUX03N



Silver Marble Natural | 200x600x6.5mm - LUX11N



Greige Granite Natural | 200x1200x6.5mm - LUX05N



Bianco Carrara Polished | 200x1200x6.5mm
& | 200x600x6.5mm - LUX03P

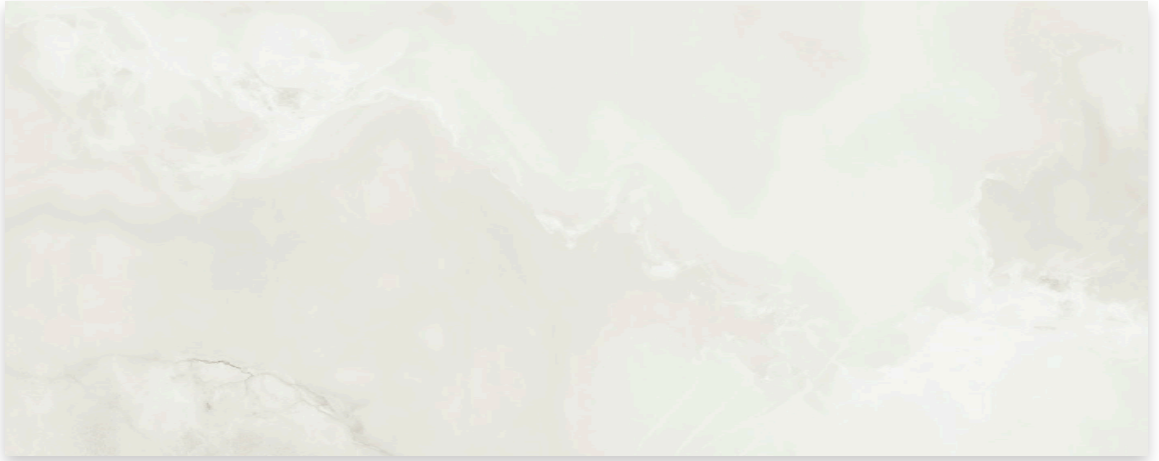


Ivory Calacatta Polished | 200x1200x6.5mm - LUX01P



Colours & Product Codes

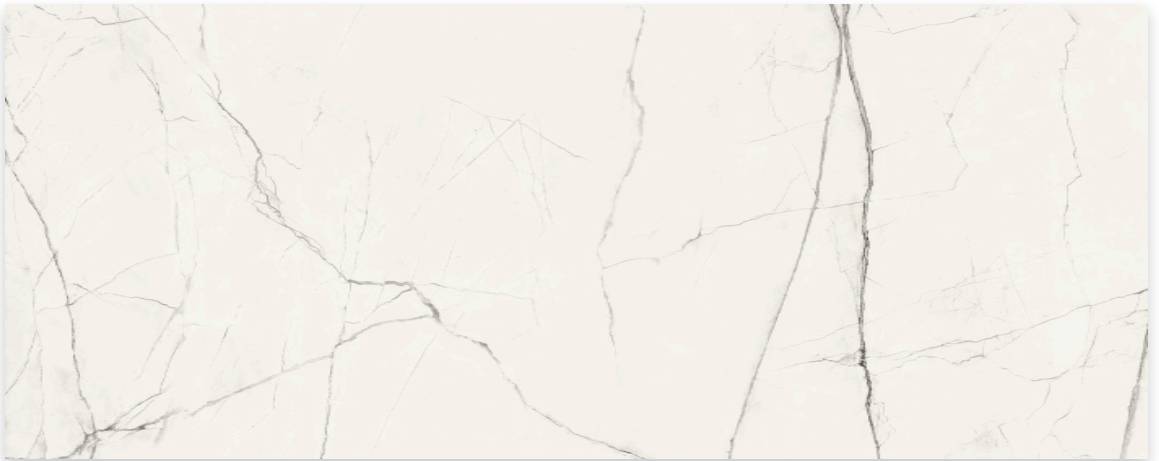
V2: Low to Moderate Shade Variation



WHITE ONYX

Product Code - 1200x1200mm & 1200x600mm: **(N)** LUX09N + **(P)** LUX09P

Mosaic Code: **(N)** LUX9NM | Fitting Code: **(N)** LUX9NS + **(P)** LUX9PS



IVORY CALACATTA

Product Code - 1200x1200mm, 1200x600mm & 600x600mm: **(N)** LUX01N + **(P)** LUX01P

Mosaic Code: **(N)** LUX1NM | Fitting Code: **(N)** LUX1NS + **(P)** LUX1PS



BIANCO CARRARA

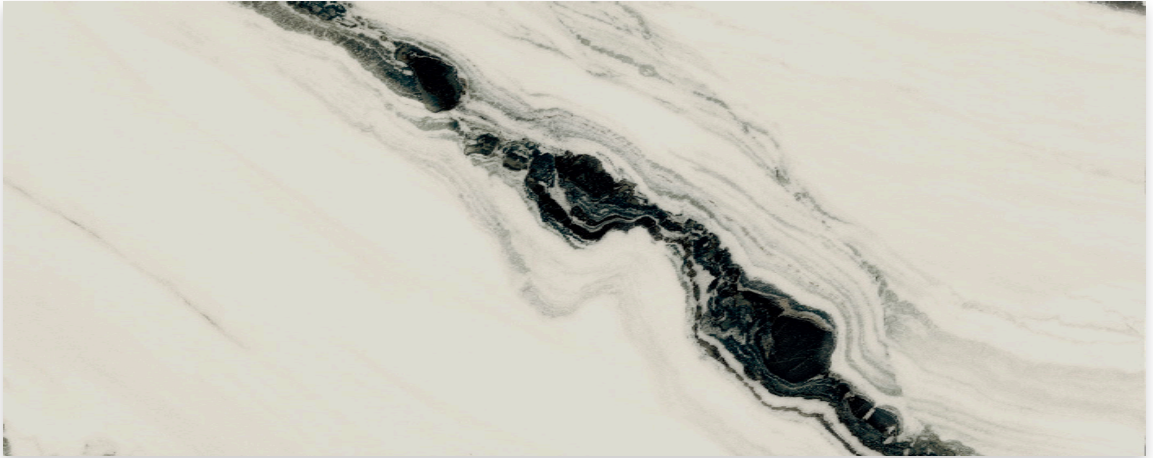
Product Code - 1200x1200mm & 1200x600mm: **(N)** LUX03N + **(P)** LUX03P

Mosaic Code: **(N)** LUX3NM | Fitting Code: **(N)** LUX3NS + **(P)** LUX3PS



Colours & Product Codes

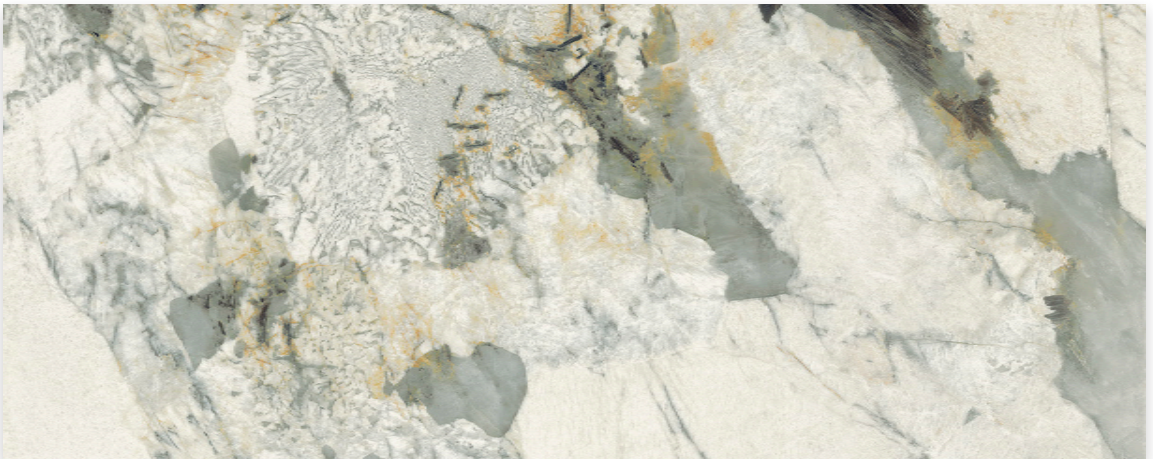
V2: Low to Moderate Shade Variation



PINTO MARBLE

Product Code - 1200x1200mm & 1200x600mm: **N** LUX02N + **P** LUX02P

Mosaic Code: **N** LUX2NM | Fitting Code: **N** LUX2NS + **P** LUX2PS



LIGHT QUARTZITE

Product Code - 1200x1200mm & 1200x600mm: **N** LUX10N + **P** LUX10P

Mosaic Code: **N** LU10NM | Fitting Code: **N** LU10NS + **P** LU10PS



CREMA MARBLE

Product Code - 1200x1200mm, 1200x600mm & 600x600mm: **N** LUX04N + **P** LUX04P

Mosaic Code: **N** LUX4NM | Fitting Code: **N** LUX4NS + **P** LUX4PS



Colours & Product Codes

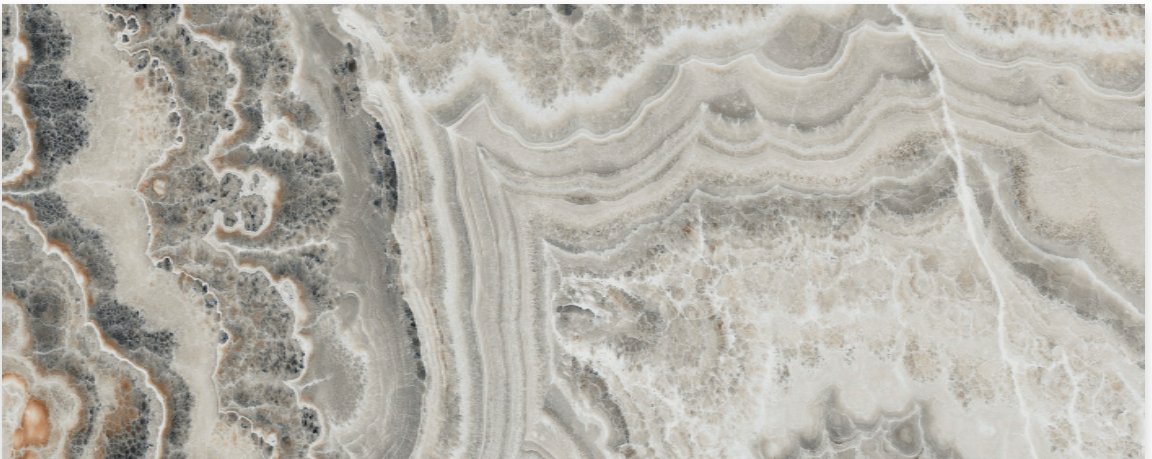
V2: Low to Moderate Shade Variation



GREIGE GRANITE

Product Code - 1200x1200mm, 1200x600mm & 600x600mm: **(N)** LUX05N + **(P)** LUX05P

Mosaic Code: **(N)** LUX5NM | Fitting Code: **(N)** LUX5NS + **(P)** LUX5PS



GREIGE ONYX

Product Code - 1200x1200mm & 1200x600mm: **(N)** LUX06N + **(P)** LUX06P

Mosaic Code: **(N)** LUX6NM | Fitting Code: **(N)** LUX6NS + **(P)** LUX6PS



SILVER MARBLE

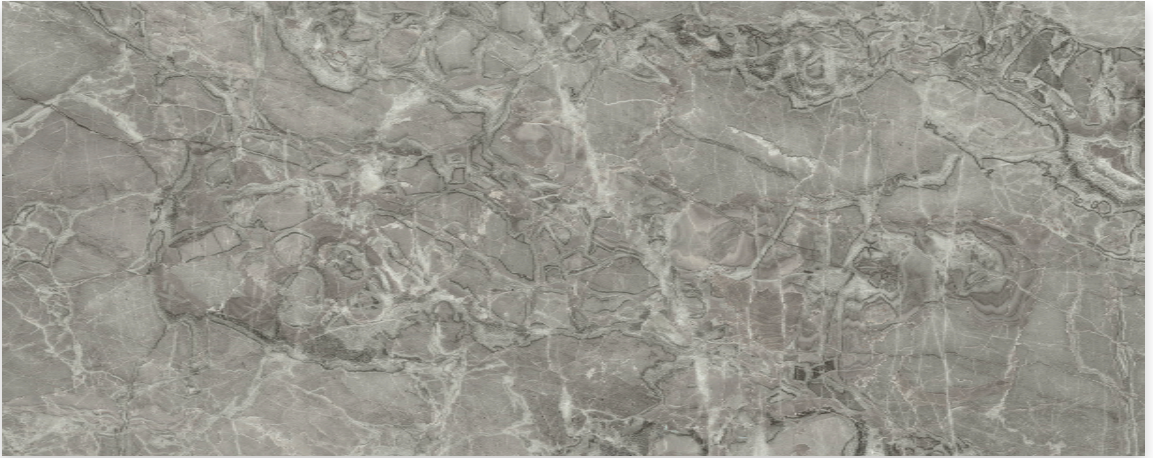
Product Code - 1200x1200mm & 1200x600mm: **(N)** LUX11N + **(P)** LUX11P

Mosaic Code: **(N)** LUX11NM | Fitting Code: **(N)** LUX11NS + **(P)** LUX11PS



Colours & Product Codes

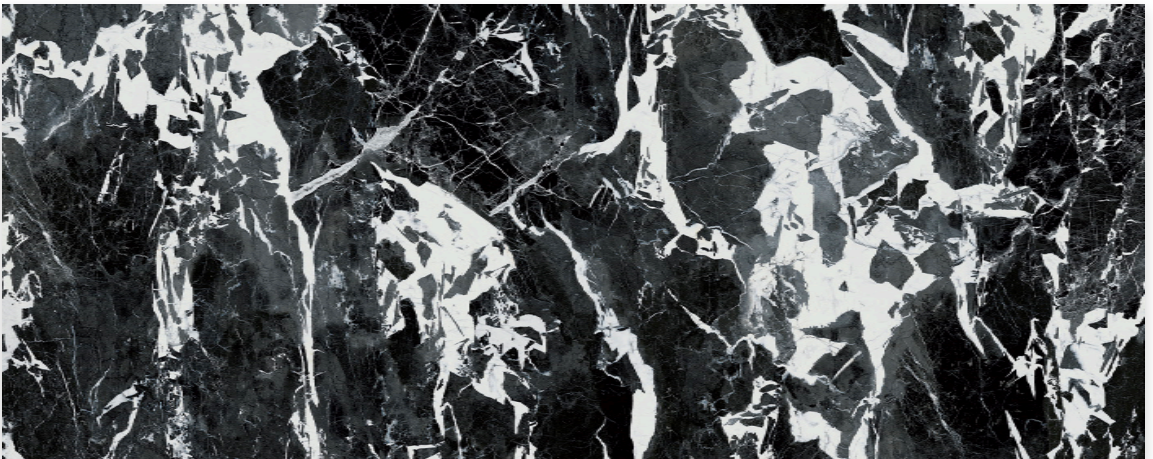
V2: Low to Moderate Shade Variation



GREY BRECHE

Product Code - 1200x1200mm & 1200x600mm: **N** LUX12N + **P** LUX12P

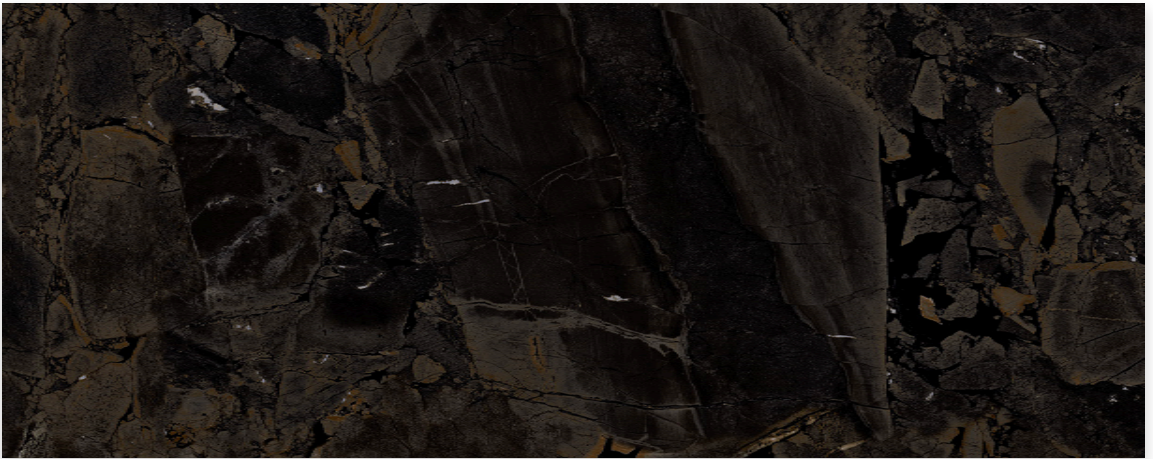
Mosaic Code: **N** LUI2NM | Fitting Code: **N** LUI2NS + **P** LUI2PS



NERO MARBLE

Product Code - 1200x1200mm & 1200x600mm: **N** LUX07N + **P** LUX07P

Mosaic Code: **N** LUX7NM | Fitting Code: **N** LUX7NS + **P** LUX7PS



CARBON QUARTZ

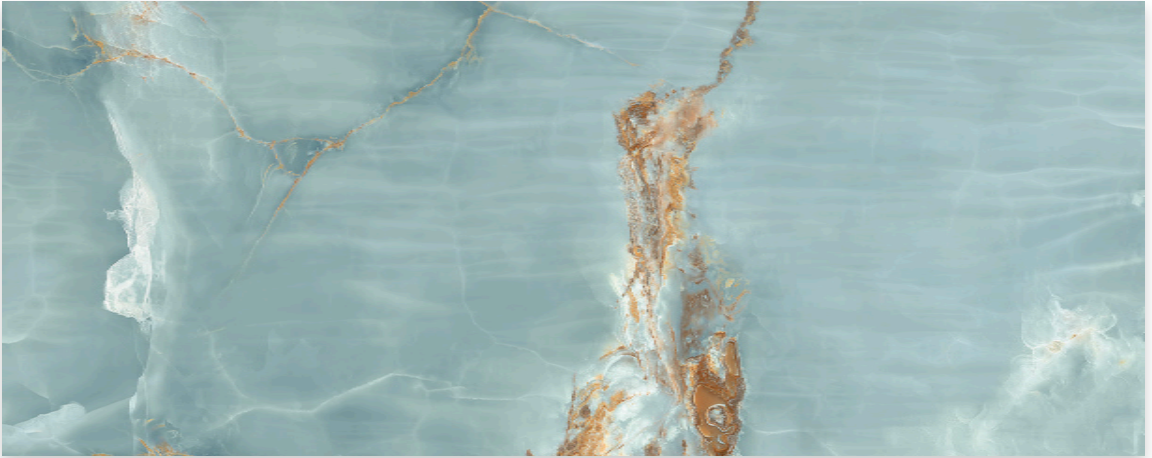
Product Code - 1200x1200mm, 1200x600mm & 600x600mm: **N** LUX08N + **P** LUX08P

Mosaic Code: **N** LUX8NM | Fitting Code: **N** LUX8NS + **P** LUX8PS



Colours & Product Codes

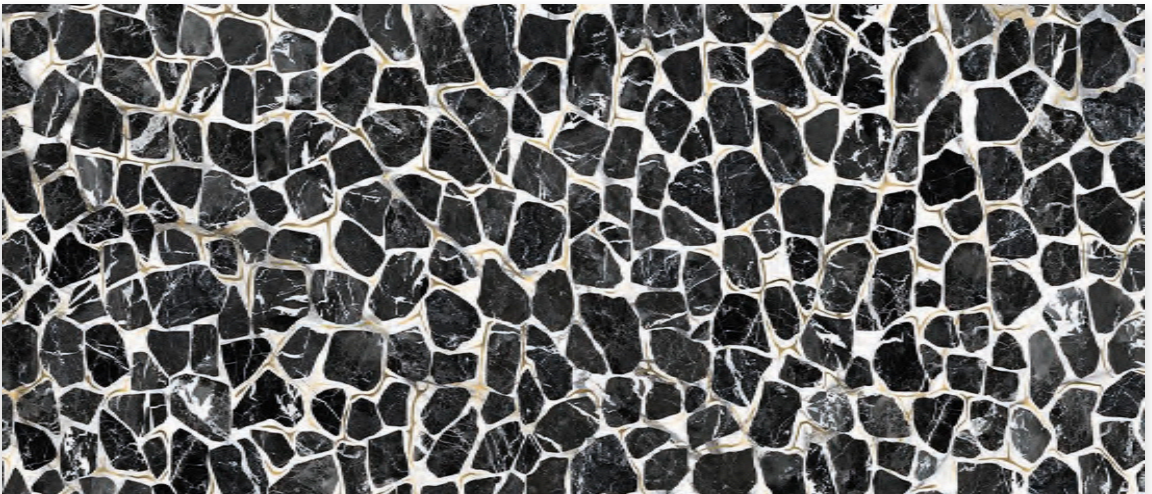
V2: Low to Moderate Shade Variation



AQUA ONYX

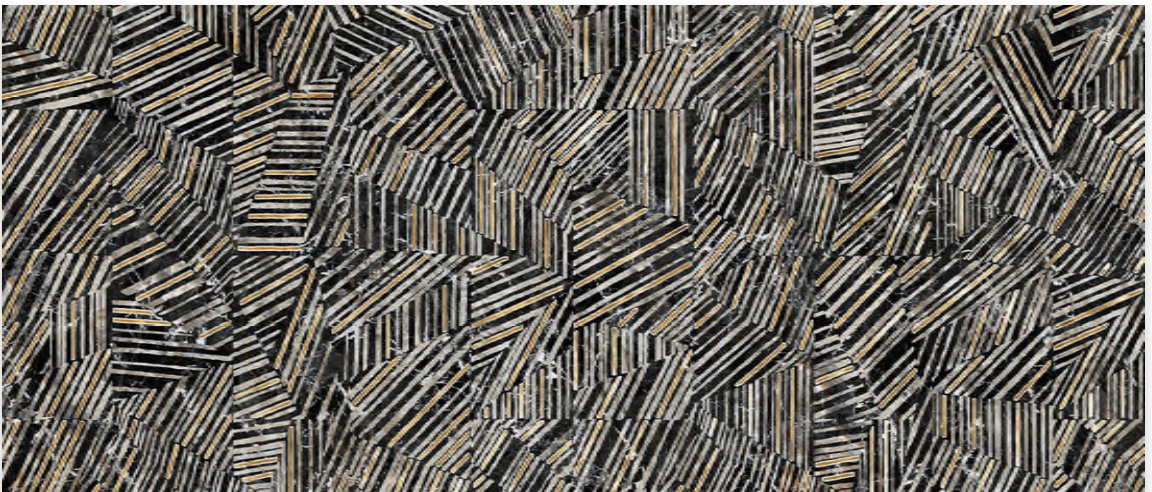
Product Code - 1200x1200mm & 1200x600mm: **[N]** LUX13N + **[P]** LUX13P

Mosaic Code: **[N]** LUI3NM | Fitting Code: **[N]** LUI3NS + **[P]** LUI3PS



TURTLE DÉCOR

Product Code - 1200x600mm: **[P]** LUX03D



SNAKE DÉCOR

Product Code - 1200x600mm: **[P]** LUX04D



Colours & Product Codes

V2: Low to Moderate Shade Variation



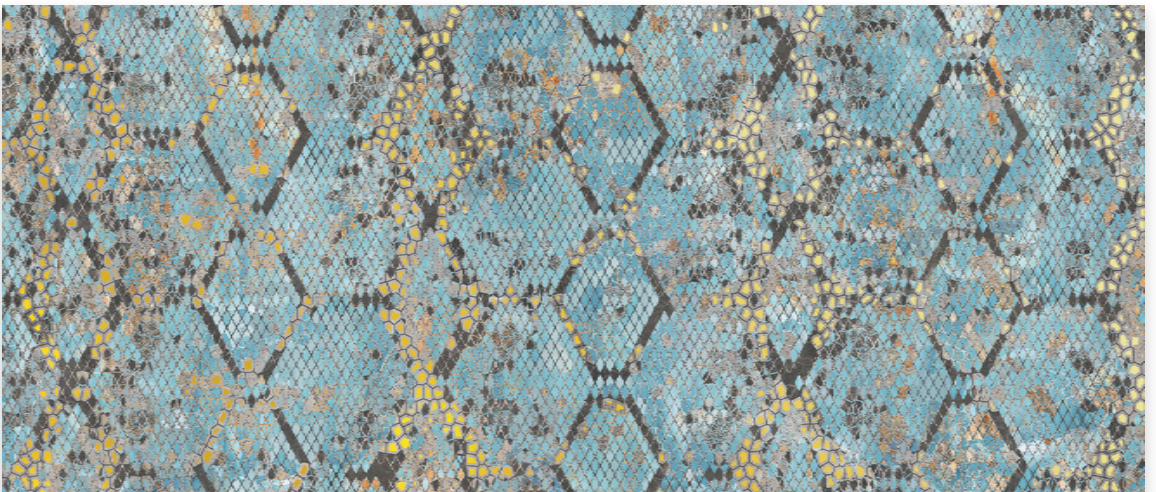
ORYX DÉCOR

Product Code - 1200x600mm: LUX05D



JAGUAR DÉCOR

Product Code - 1200x600mm: LUX06D



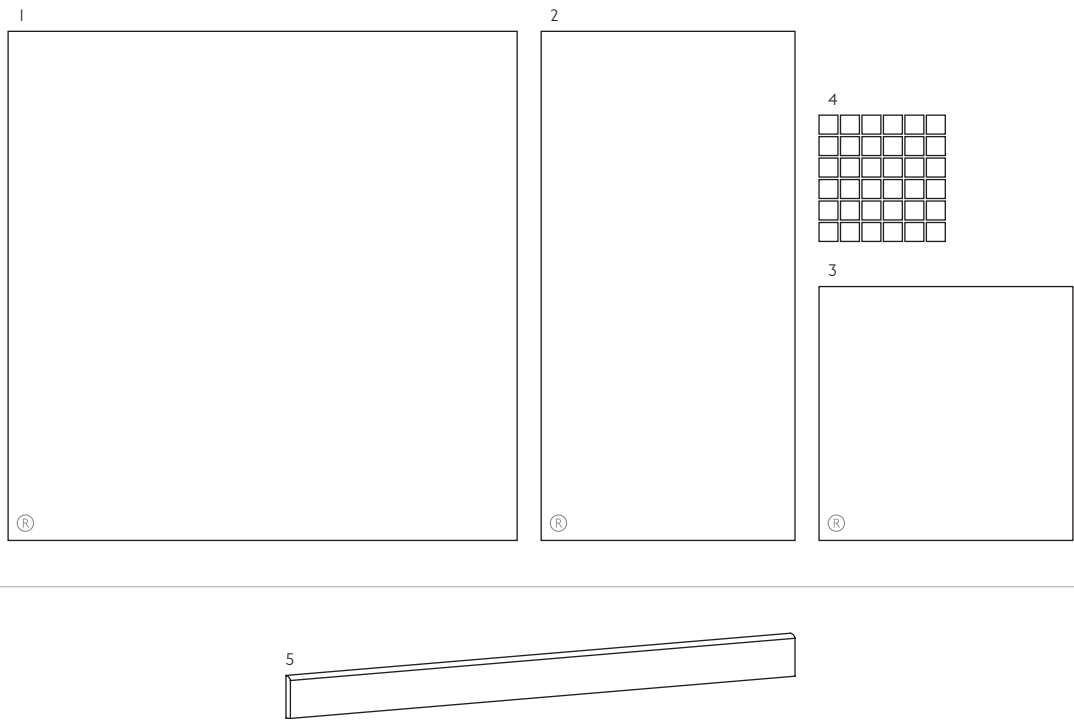
PYTHON DÉCOR

Product Code - 1200x600mm: LUX07D



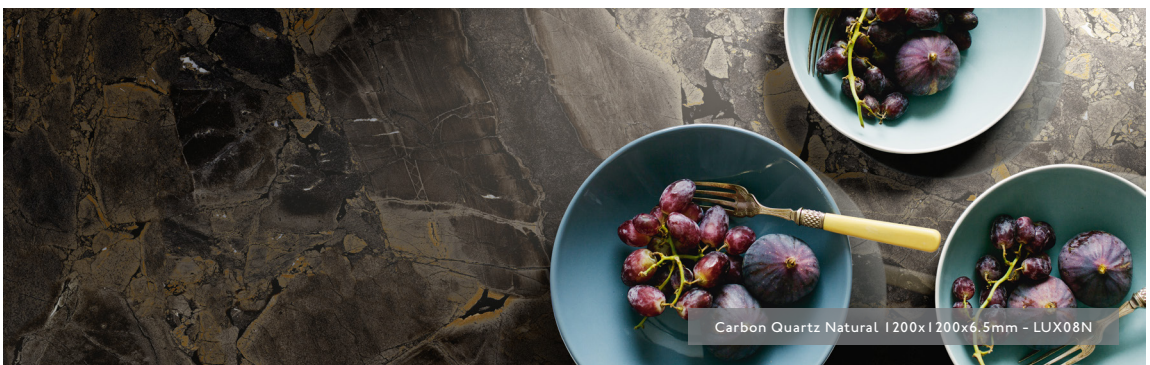
Size Formats

Sizing & Packing Information



#	Size	Thickness	Finish	Availability	Class	Pcs / Box	M ² / Box	Kg / Box
1	1200x1200mm	6.5mm	(N) Natural	LUX01N / 02N / 03N / 04N / 05N / 06N / 07N / 08N / 09N / 10N / 11N / 12N / 13N	Bla	2 Tiles	2.88 m ²	46.40 kg
			(P) Polished	LUX01P / 02P / 03P / 04P / 05P / 06P / 07P / 08P / 09P / 10P / 11P / 12P / 13P	Bla	2 Tiles	2.88 m ²	46.40 kg
2	1200x600mm	6.5mm	(N) Natural	LUX01N / 02N / 03N / 04N / 05N / 06N / 07N / 08N / 09N / 10N / 11N / 12N / 13N	Bla	4 Tiles	2.88 m ²	46.07 kg
			(P) Polished	LUX01P / 02P / 03P / 04P / 05P / 06P / 07P / 08P / 09P / 10P / 11P / 12P / 13P / LUX03D / 4D / 5D / 6D / 7D	Bla	4 Tiles	2.88 m ²	46.07 kg
3	600x600mm	6.5mm	(N) Natural	LUX01N / 04N / 05N / 08N	Bla	5 Tiles	1.80 m ²	27.81 kg
			(P) Polished	LUX01P / 04P / 05P / 08P	Bla	5 Tiles	1.80 m ²	27.81 kg
4	300x300mm (50x50mm) Square Mosaic	6.5mm	(N) Natural	LUX1NM / 2NM / 3NM / 4NM / 5NM / 6NM / 7NM / 8NM / 9NM / 10NM / 11NM / 12NM / 13NM	Bla	6 Sheets	0.54 m ²	7.48 kg
#	Fitting	Thickness	Finish	Availability	Class	Pcs / Box	LM / Box	Kg / Box
5	1200x60mm Round Top Skirting	6.5mm	(N) Natural	LUX1NS / 2NS / 3NS / 4NS / 5NS / 6NS / 7NS / 8NS / 9NS / 10NS / 11NS / 12NS / 13NS	Bla	8 Tiles	9.60 Lm	9.08 kg
			(P) Polished	LUX1PS / 2PS / 3PS / 4PS / 5PS / 6PS / 7PS / 8PS / 9PS / 10PS / 11PS / 12PS / 13PS	Bla	8 Tiles	9.60 Lm	9.08 kg

Note: Glazed Porcelain Tiles [Bla]. For more information please see the suitability advice given in the technical section. All sizes indicated are metric modular. All sizes shown are nominal. For the most up-to-date size, colour and finish availability, please visit our website - www.johnson-tiles.com. (R) Rectified Edge.





Technical, Sustainability & Important Information

Specification

Range	Finish	Wall Suitability	Floor Suitability	Wet Barefoot	CSV	Material / Class
Luxe	N Natural	Internal & External	Internal Only	-	V2	Glazed Porcelain [Bla]
	P Polished	Internal & External	Internal Only	-	V2	Glazed Porcelain [Bla]

Floor Values

Finish	Colour	PTV (4S)	PTV (TRL)	R Value	Wet Ramp	PEI	Traffic
N Natural	All Colours	Dry 36+ Wet 25 - 35	-	R9	A	-	Commercial
P Polished	All Colours	Dry 36+ Wet 0 - 24	-	-	-	-	Commercial

Physical Properties

Test & Standard	Requirement	Test Result	Test & Standard	Requirement	Test Result
Length / Width EN ISO 10545 - 2	$\pm 0.6\% \leq \pm 2\text{mm}$	Pass	Modulus of Rupture EN ISO 10545 - 4	Min. 35N / mm ²	$\geq 45\text{N} / \text{mm}^2$
Thickness EN ISO 10545 - 2	$\pm 5\% \leq \pm 0.5\text{mm}$	Pass	Thermal Shock EN ISO 10545 - 9	Pass	Pass
Straightness of Side EN ISO 10545 - 2	$\pm 0.5\% \leq \pm 1.5\text{mm}$	Pass	Frost Resistance EN ISO 10545 - 12	Resistant	Resistant
Rectangularity EN ISO 10545 - 2	$\pm 0.5\% \leq \pm 2\text{mm}$	Pass	Chemical Resistance EN ISO 10545 - 13	Min. Class B	Min. Class B
Surface Flatness EN ISO 10545 - 2	$\pm 0.5\% \leq \pm 2\text{mm}$	Pass	Stain Resistance EN ISO 10545 - 14	Min. Class 3	Min. Class 3
Water Absorption EN ISO 10545 - 3	$\leq 0.5\%$	$\leq 0.1\%$	Fire Rating	-	Class A I FL Non Combustible
Weight / M²	15.72 kg 6.5mm thick				

Sustainability Information

Range	Material	EPD	Recycled Content of the Tiles	Recycled Content of the Packaging	Recyclable Content of the Packaging
Luxe	Glazed Porcelain [Bla]	Yes	-	Up to 100%	Up to 100%

Note: Due to the manufacturing process of all floor tiles there may be small variations in slip resistance. Given this, please refer to our website for the most up-to-date information. The slip resistance properties of a surface can only be maintained with the implementation of an effective regular cleaning and maintenance regime. The frequency of cleaning should be determined by the property manager based on the potential level of surface contaminants. The need for an additional regular cleaning and maintenance regime is further heightened when tiles are used for external floor and wet barefoot applications. Please contact our Technical Advice Helpline for specification and installation advice. ALL Glazed Porcelain [Bla] products shown in this sample wallet conform to BS EN 14411. CSV: Colour Shade Variation. PTV (4S): Pendulum Test Value - Slider 96. PTV (TRL): Pendulum Test Value - Slider 55. R Value (DIN 51130). Wet Ramp (DIN 51097). PEI: Porcelain Enamel Institute. EPD: Environmental Product Declaration. For a full company sustainability overview please visit www.johnson-tiles.com/about/sustainability.

Important Information

During the manufacturing process of ceramic and porcelain tiles, some variation in shade and pattern can occur. Before fixing any tiles, several boxes should be opened and their contents mixed to ensure that size, colour, shade and patterning are acceptable. The tiles shown are quality products and conform to the physical properties listed. For a comprehensive colour, size and finish overview along with full technical and sustainability information for all of the product shown in this product presenter, please visit our website - www.johnson-tiles.com.

- All sizes shown are metric modular.
- For specific suitability details please contact our Technical Advice Helpline.
- Johnson Tiles cannot accept responsibility for tiles that have been fixed.
- Every effort has been made to ensure the accuracy of the information given.
- Johnson Tiles reserves the right to change specification and availability information without prior notice.
- Nothing in these statements does/will affect the statutory rights of the consumer.

© Johnson Tiles, Johnson, Absolute and Material Lab are registered trademarks and together with Kerastar and product names are the trademarks of H&R Johnson Tiles Limited and licensed to Norcros Group (Holdings) Limited trading as Johnson Tiles. © 2024 Johnson Tiles. All rights reserved.



All product technical values quoted in this product presenter are supported by laboratory testing from our own and independent ceramic test houses. Johnson Tiles are British Standard registered and all products conform to the standards set in BS EN 14411.

For the reassurance of single-source supply, Johnson Tiles offers a free of charge NBS M40 specification writing service featuring a range of tile fixing products. To find out more or for any questions or queries relating to any tile related technical information featured in this sample wallet, please contact our Technical Advice Helpline on +44 (0)1782 524 111 or email ddunlop@johnson-tiles.com

The colours shown in this sample wallet and attached booklet are as accurate as printing processes will allow. Please refer to actual product samples before specifying. Every effort has been made to ensure the accuracy of the information given.

Installation Advice

Codes of Practice

All fixing of floor and cladding tiles should be in accordance with the following codes of practice guidelines:

BS5385 Part 1 - 2018

Design and installation of internal ceramic, natural stone and mosaic wall tiling in normal conditions.

BS5385 Part 2 - 2015

Design and installation of external ceramic, natural stone and mosaic wall tiling in normal conditions.

BS5385 Part 3 - 2014

Design and installation of internal and external ceramic and mosaic floor tiling in normal conditions.

BS5385 Part 4 - 2015

Design and installation of ceramic and mosaic tiling in specific conditions.

BS5385 Part 5 - 2009

Design and installation of terrazzo, natural stone, and agglomerated stone tile and slab flooring.

BS8000 Part 11 - 2011

Workmanship on building sites. Internal and external wall and floor tiling. Ceramic and agglomerated stone tiles, natural stone and terrazzo tiles and slabs and mosaics.

Blll (Ceramic) tiles smaller than 400x300mm require the use of an adhesive with a D1 or D2 classification. Larger tiles require an adhesive with C2 classification.

Bla (Porcelain) tiles require the use of a polymer modified adhesive with a classification of C2* and grouts specifically formulated for the fixing and grouting of porcelain tiles.

* Check with the adhesive manufacturer for additional C1 product suitability.

Substrates

Before tiling is commenced it is important to ensure that the correct minimum curing periods have been observed for all substrates:

Concrete (6 Weeks)

Screed - Non Modified (3 Weeks)

Rendering - Non Modified (2 Weeks)

Gypsum Plastering (4 Weeks)

Brickwork / Block-work (6 Weeks)

Accuracy of the substrate must be checked to ensure that the guidance given in BS5385 has been achieved i.e. "local variations in level for a nominally flat floor or wall should be such that, when checked with a 2m

straight-edge, any gap under the straight-edge between points of contact does not exceed 3mm".

Movement Joints

The location, type and scope of all movement joints must be ascertained prior to any fixing works. All structural joints must be followed through to the face of the tile at full width with intermediate movement joints (minimum 6mm wide) being situated at:

Changes of Plane (Incl. Wall Corners)

Wall / Floor Junctions

Where Tiling Abuts Other Materials

Additionally at 3 to 4.5m maximum centres for wall tiling and 8 to 10m maximum bay centres for floor tiling (in suspended floors the bay dimensions should be reduced by providing additional joints over supporting walls and beams).

Movement joints can either be filled with a suitable backer, bond breaker and filler (e.g. silicone for walls tiles only or epoxy polysulphide for floor and wall tiles – please check with manufacturer for suitability) or be of the pre-formed variety.

Design / Layout

Consideration to locations of plane changes and room sizes should be undertaken to ensure the best tile size is selected to minimise cutting and improve aesthetics.

Adhesives

Adhesives should be in accordance with BS EN 12004, Class D1 or D2 for ceramic tiles and Class C2 or C1* for porcelain tiles. Particular adhesive choice will be governed by the type of substrate.

* Check with the adhesive manufacturer for additional C1 product suitability.

Johnson Tiles recommends the use of the following adhesive products – see below:

Ceramic Tiles (Blll)

Substrate	Product
Concrete	One Part Flexible
Sand / Cement Screed	One Part Flexible
Brick / Block-work	One Part Flexible
Plaster Gypsum	One Part Flexible
Plasterboard	One Part Flexible

Porcelain Tiles (Bla)

Substrate	Product
Concrete	Rapid Porcelain / Flexible
Sand / Cement Screed	Rapid Porcelain / Flexible
Wood Floors	Rapid Porcelain / Flexible*
Brick / Block-work	Rapid Porcelain / Flexible
Plaster Gypsum	Rapid Porcelain / Flexible
Plasterboard	Rapid Porcelain / Flexible**

* Overlay with minimum 15mm WBP / Marine Ply and Prime using an adequate Prime and Seal.

** Prime using an adequate Prime and Seal.

Grouts

The choice of grout type should reflect the expected service conditions of the installation.

For general internal wall tiling in dry conditions and walls subject to frequent wetting i.e. showers and pool halls, use an adequate 4 in 1 Cement Based Grout - classified as CG2.

For walls where hygiene is important i.e. commercial kitchens and hospitals, use an adequate Super Epoxy Grout - classified as RG1.

For general floor tiling use an adequate 4 in 1 Flexible Wall and Floor Tile Grout - classified as CG2.

For floors subject to frequent wetting i.e. showers and pool halls, use an adequate 4 in 1 Flexible Wall and Floor Tile Grout - classified as CG2 (hard water areas) or an adequate Super Epoxy Grout - classified as RG1 (soft water areas).

For specific fixing advice, please contact our technical advice helpline on +44 (0)1782 524 111 or email ddonlop@johnson-tiles.com.

Fixing Tiles

All tiles should be fixed with a solid bed of adhesive, this ensures maximum durability and strength within the installation and long term adhesion performance. This is achieved with the use of a notched solid bed trowel. It is good practice to periodically remove a recently fixed tile to ensure that the correct bedding is being achieved and maintained. When fixing all tiles care must be taken to ensure that no lipping of tiles occurs.

All tiles shown in this brochure are recommended to be fixed with a nominal 3mm wide joint.

Cleaning and Maintenance

Maintaining the appearance and characteristics (especially slip resistance values) of floor tiles is achieved with the implementation of a suitable cleaning regime. It must be stressed that the cleaning material manufacturers instructions must be followed at all times. Regular and correctly undertaken cleaning should maintain a flooring product as close to its original state as possible. Incorrect or infrequent cleaning will adversely affect the properties of the flooring material and increase potential hazards. Generally the smoother the surface of the tile the easier it is to clean. However, it should be noted that textured products, required to give adequate slip resistance when wet, can be satisfactorily cleaned – the cleanability of a surface is more a function of the contaminant than the texture of the surface. It is therefore essential when selecting and specifying a floor finish that the use of the area and likely contaminants, safety, aesthetic and hygiene requirements are all taken into account at the specification stage.

Cleaning can be split into several categories, each of which is dependent upon installation type (i.e. wet barefoot areas, shopping malls, public toilets, etc.) and frequency of usage (i.e. high, medium or low traffic):

Builders Clean

This should be undertaken before a floor is being brought into service. The builders clean removes any residual film leftover from the grouting operation and is a one-off cleaning process. This must be carried out as any grout residues left behind will act as a key for dirt resulting in the installation being difficult to clean. Temporary sealers may be used to facilitate cleaning off after laying which can be removed with the use of alkaline detergents.

Cementitious Grouts

The use of a mild acid de-cementing solution followed by thorough rinsing will remove all but the most stubborn of cement residues.

Epoxide Grouts

It is essential that ALL residue must be removed from the surface of the tiles during the grouting process and before the resin cures. Failure to achieve this will result in a very difficult and expensive process using gel-type epoxide removers.

Routine Cleaning

The regular use of detergents or other cleaning agents, which are excessively acidic or alkaline could cause irreversible damage to the ceramic tile surface. Degreasing agents that contain wax, sodium silicate or other additives which leave sticky deposits and thus retain dirt should be avoided. Oil residues or build-ups of wax can be removed with a proprietary wax and polish remover.

Manual Cleaning

In normal conditions tiles require little maintenance and can be easily kept clean by sweeping and then mopping with warm water to which a neutral or nearly neutral detergent has been added. The cleaning solution should remain on the floor for 5 to 15 minutes (see manufacturers instructions) to allow it to penetrate and emulsify the dirt after which it should be removed by rinsing thoroughly with clean water. The rinsing process removes the dirt so the use of clean water is important.

Mechanical Cleaning

For larger floor areas or areas of textured tiles the use of a rotary scrubbing machine is recommended (machines should not be used at speeds in excess of 450rpm). The choice of brush type is very important. Union mix brushes are suitable for light washing and scrubbing, polypropylene brushes are suitable where dirt deposits are especially heavy. The cleaning solution should remain on the floor for 5 to 15 minutes (see manufacturers instructions) after which a secondary scrubbing action and clean mop or suction should be undertaken to remove the solution and dirt.

High Pressure Cleaning

Tiles seldom require the use of high-pressure cleaning. Whilst the process will not damage the tiles care must be taken to avoid erosion of the grout. To minimise grout erosion ensure that the water beam is continually moved from side to side and not allowed to concentrate on the grouted joints. Water containing abrasives or steam cleaners should not be used on ceramic tiles.

Wet Areas

Wet barefoot areas may attract build-ups of body fats, soaps, oil residues and organic growth. To prevent these a mildly acidic cleaning agent used regularly is preferable. If build-up has been allowed a preliminary deep clean with a proprietary cleaner is followed by regular use of a mildly acidic cleaning agent solution.

Periodic Deep Cleaning

Occasionally foreign matter may cause surface marks that cannot be removed with the usual cleaning processes and materials. If the surface mark cannot be removed, other materials should be considered (it's advisable to experiment on a small inconspicuous area):

Paint - Paint Remover

Organic Stains - Bleach / Washing Soda

Rust - Masonry Cleaner

Oil / Fat / Grease - Detergent or Degreaser

Mould Growth - Bleach / Proprietary Cleaner

Tea / Coffee / Ink - Bleach / Proprietary Cleaner

Abrasive powders or cleaners should never be used on glazed or polished tiles.

For more information about **Luxx** or any of our other product ranges simply visit **www.johnson-tiles.com** |       

Where To Find & Contact Us

Johnson Tiles Head Office

Harewood Street, Tunstall,
Stoke on Trent, Staffordshire,
ST6 5JZ, United Kingdom

Tel: +44 (0) 1782 575 575
Email: info@johnson-tiles.com
www.johnson-tiles.com

Material Lab Studio

10 Great Titchfield Street,
London, W1W 8BB,
United Kingdom

Tel: +44 (0)20 7436 8629
Email: info@material-lab.co.uk
www.material-lab.co.uk

Johnson Tiles Factory Outlet

Tel: +44 (0) 1782 524 040
Email: foutlet@johnson-tiles.com
www.outlet.johnson-tiles.com

Customer Services

Tel: +44 (0) 1782 524 000
Email: sales@johnson-tiles.com
8:30am - 5:00pm (Mon - Fri)

Order A Sample

Tel: +44 (0) 1782 524 043
Email: samples@johnson-tiles.com

Technical Advice Helpline

Tel: +44 (0) 1782 524 111
Email: ddunlop@johnson-tiles.com

Launched: July 2021 - Updated: January 2024

www.johnson-tiles.com |       

JOHNSON • TILES 
MADE IN THE UK SINCE 1901

Johnson Tiles is a division of Norcros Group (Holdings) Limited,
Ladyfield House, Station Road, Wilmslow, Cheshire, SK9 1BU,
United Kingdom. Registered in England number 566694.